

Blue-grey Taildropper IDENTIFICATION GUIDE

Faint constriction line where slug detaches tail if seized by predator (feature of all taildropper species)

Mantle covers almost half of body

Tentacles

Breathing pore (pneumostome) slit-like on mantle edge

Parallel grooves & ridges along tail

This small, rare slug's Canadian range includes only southern Vancouver Island. This guide will help distinguish this endangered species from similar native and introduced slugs (see reverse).



HAT

Canada

Please send slug photos for ID to hatmail@hat.bc.ca or call 250.995.2428
HAT acknowledges funding from the Government of Canada's Habitat Stewardship Program



Solid colour from blue



to pale grey,



with no mottling or banding



Adult
2-3 cm



Juvenile
<1 cm



Juvenile on
mushroom

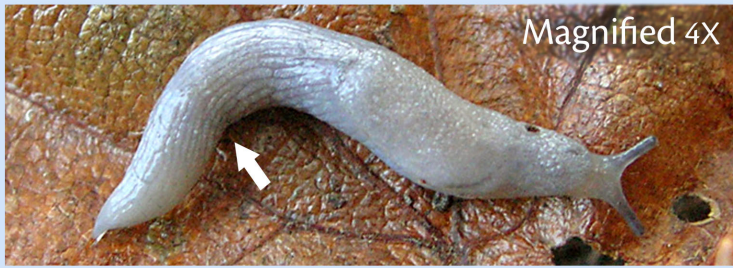
photo: Lennart Sopuck



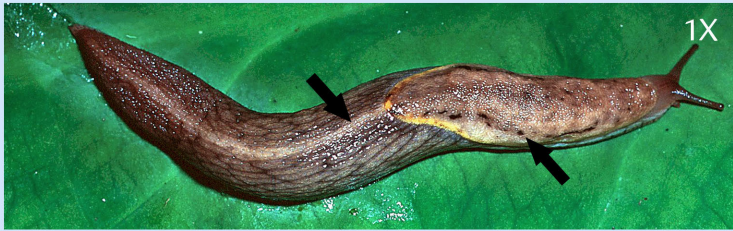
Map of
Greater
Victoria

Blue-grey
Taildroppers
Found:

Compare Blue-grey Taildroppers with similar slugs:



Blue-grey Taildropper (*Prophysaon coeruleum*)
2-3 cm. Solid colour: ranges from blue to grey; no mottling or banding. Mantle covers almost half of body. Breathing pore (pneumostome) slit-like on mantle edge towards the front. Faint constriction line on tail. (arrow) See photo of same species on bottom right.



Yellow-bordered Taildropper (*P. foliolatum*)
5 - 10 cm. Light mid-dorsal stripe on tail (arrow); dark lateral stripe on each side of mantle may be broken (arrow). Colour variable; yellow mantle edge. Yellow mucus. Note: **Reticulate Taildropper** (*P. andersonii*), not shown, is similar but smaller, and lacks yellow mantle edge.



Scarletback Taildropper (*P. vanattae*)
2.5 - 4 cm. Grey, tan, black, to orange. Dark lateral stripes on each side of mantle and tail (arrows) which may be bordered by a lighter band.



Longneck Fieldslug (*Deroceras panormitanum*) Introduced.
2.5 - 3 cm. Translucent grey or brown, often with fine dark flecks. Pneumostome at rear of mantle, often with light border (arrow). Mucus clear.



Grey Fieldslug (*Deroceras reticulatum*) Introduced.
3.5 - 5 cm. Cream, tan, or grey; usually with dark mottling or flecks. Pneumostome at rear of mantle (black arrow). Partial keel (ridge) towards tail end (white arrow). Mucus milky white.



Worm Slug (*Boettgerilla pallens*) Introduced.
3 - 6 cm. Light grey to bluish. Burrowing & worm-like when moving. Keel (ridge) atop entire tail (arrow).

Hedgehog Arion (*Arion intermedius*) Introduced.
1-2 cm. Light grey; dark head & tentacles, yellowish bottom. Prickly when contracted (below). Faint or no lateral bands.

Hatchlings of **Chocolate Arion** (*A. rufus*) & many other introduced *Arions* are tiny & bell-shaped when contracted. Grey to bluish; dark lateral bands often present. Tail lacks parallel grooves & constriction line found on taildroppers.

